

# Albury Parish News

**February 2024**

**Number 407**



**Serving the local communities of Albury,  
Albury Heath, Brook, Farley Green,  
Little London and Newlands Corner**

# Services in Albury and Farley Green for February 2024

At the Parish Church, Church Lane, Albury  
unless stated.

**‘Worship for everyone’**

**9.30 services are livestreamed**

All are welcome in church. For the livestreaming link on relevant Sundays, if you cannot get there in person, please visit [www.alburychurches.org](http://www.alburychurches.org)

<b>4</b>	<b>8.00 a.m. Communion</b> <b>Book of Common Prayer</b>
	<b>9.30 a.m. Worship for everyone</b> What the first church was like (1)
<b>11</b>	<b>9.30 a.m. Communion Service</b> What the first church was like (2)
	<b>4.00 p.m. Messy Church</b> Intergenerational worship and activity
<b>14 (Wednesday)</b>	<b>Communion service for Ash Wednesday</b> at St Michael’s Farley Green
<b>18</b>	<b>8.00 am Holy Communion</b> <b>Book of Common Prayer</b>
	<b>9.30 a.m. Worship for everyone</b> Jesus is baptised
<b>25</b>	<b>9.30 a.m. Communion Service</b> A costly promise

In term time we have ‘Little Fishes’ - a weekly simple service, playtime and chat for pre-schoolers and those who look after them, on Friday mornings.

For details of dates, time and venue please contact [pennycrandall@hotmail.com](mailto:pennycrandall@hotmail.com).

<b>Front cover:</b>	<b>Oak on Newlands Corner</b>
---------------------	-------------------------------

## From the Minister

We're looking after our younger daughter's dog, as she and her family are going to be away on a trip. It's interesting to see the way visitor-dog and our dog interact. They do occasionally acknowledge each other's presence, but eventually you realise that what you initially thought was friendly tolerance is more like total indifference. Except for the competition.

"Me! Me! I'm the favourite dog! Give me a pat."

"Me! Me! I'm the favourite dog! I should get supper first!"

"Me! Me! I'm the favourite dog! Throw the ball for me first!"

The idea that either of them would say, "Don't worry, I can wait. You go first," is pretty much ludicrous. But I will say this for them. They accept it if the other one wins. They just wait till the winner isn't looking and then go and hijack their bed.

Maybe they might yet grow to value each other's company.

When you think about it, human beings can behave exactly the same, especially young children, but more surprisingly we can put our wants on one side if we think a greater objective is in play. On a simple level, we can delay or skip a meal to get a job finished, but also we can choose to give up our needs of food, rest, safety, and so on, to help others, sometimes at great personal cost - even if we all know examples when precisely the opposite has happened.

Animals do this sometimes, but as far as I can see, only humans add the further dimension of putting personal needs aside not just when they want to help one another, but also when they want to focus inwardly on a greater objective.

Not that it's easy to plan this. I've never been an enthusiastic keeper of Lent, for example, which is awkward, because it starts this month. I realise that the original idea of giving up things in Lent was more than economising, or losing weight for a period, nor was it to be some sort of virtuous end in itself, but it was supposed to help us focus beyond ourselves. Not sure how well I do.

People started to keep Lent to focus on one who himself gave up more than we will ever know, because to him, we are worth his love and his help and his sacrifice. -

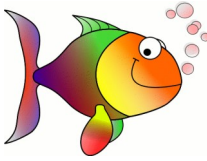
*'you know the generous act of our Lord Jesus Christ, that though he was rich, yet for your sakes he became poor, so that by his poverty you might become rich.'* (1 Corinthians 8: 9).

Whatever we do or we don't give up, we don't deserve the love he gives, and Lent allows time to reflect on that before we come to love's most outrageous demonstration at Easter.

Even if we are not yet convinced about that message, it's worth remembering why people invented Lent. There is no rule against pondering it, though you and I might be lousy at self-discipline.

*Andrew Pearson,  
Resident Minister*

## Little Fishes



Little Fishes is temporarily suspended owing to low numbers, but that we will be meeting in the Barn church on Friday 15<sup>th</sup> December at 9.30 for anyone who is able to come. For further details, please email pennycrandall@hotmail.com

## Hark & Ride

**If you would like a lift to church, then please phone 01483 202210 or 01483 203208**

If you can help in this way occasionally, please contact Theresa Channer on 202210 or Penny Randall on 203208

## Defibrillator Information

The Parish Council have installed defibrillators at the following locations.

Albury Memorial Library  
Corner

Little London (William 1V)

Newlands

Farley Green (Bus Shelter)

Main Door, St Peter and St Pauls, Church  
Lane

## Hear Here

The Hear Here clinic runs once a month in Shere Surgery, from 1 till 3pm on a Tuesday afternoon, usually the first or second Tuesday in the month. This is a volunteer led service intended for those with NHS hearing aids needing minor repairs or new batteries. Please remember to bring your NHS booklet if you have one.

To book an appointment please call the surgery on 01483 202066.

Dates for upcoming session: 6<sup>th</sup> February.

*Penny Randall*

## Advertise in the Albury Parish News

If you are a local company or supplier, you could place an ad in the Albury Parish News. We distribute over 600 magazines in the parish – everyone receives a copy.

<b>Quarter page (9 x 6 cm portrait)</b>	Annual insertion fee	£110,
	Monthly insertion fee	£12
<b>Half page (9 x 12cm Landscape)</b>	Annual insertion fee	£220,
	Monthly insertion fee	£25
<b>Full Page (18 x 12 cm portrait),</b>	Annual insertion fee	£450
	Monthly insertion fee	£50

For any further information, please contact me.

*Denise Chamberlain*  
*ads@alburychurches.org*



## The Monday Café

At last, after four years of closure owing to Covid and the social fears associated with it, I have been persuaded to reopen our beloved Monday Café, Albury's answer to a means of meeting for a chat over a hot drink and a delicious piece of homemade cake. As before, we shall open every Monday morning between 10 and 12.30, in the Memorial Library, attached to Albury's Village Hall. Everybody is welcome, it's not just for the elderly! We initially set it in place for those in the community who were perhaps lonely, owing to being new to the village or maybe had a new baby, or looking after a loved one. We welcomed everyone. And so we shall continue to offer the same friendly service and the same delicious treats, which will get the week off to a good start to all who visit us.

Monday, 5<sup>th</sup> February, 2024, is our opening date. Please pop by and bring a friend. We need as many people as possible to know that once more, the Monday Café is alive and kicking!!

*Carolyn Woods*

## All shipshape at Messy Church

Twenty five children and nineteen adults happily came aboard in January and found themselves presented with various ships, like worship and fellowship. As usual, activity can be a good way into thinking - bark ships sailed to various ports, and edible ships reminded us how far the wise men came to see Jesus. Away from the model shipping, a game of find the object told us that discipleship in some countries means danger if you are found, and spinners to put the orangutan back in the jungle pointed to stewardship, in our responsibility to care for the world.

There was more, and it ended with a lovely tea. The next Messy Church is on 11<sup>th</sup> February - 4.00 p.m. at Albury Parish Church.



The natural bark boats get under way

# Food Banks Need Your Help More Than Ever In 2024! Not Just Food.



Hunger in the UK isn't about food. It's lack of income and the main drivers of foodbank use are:-

- Problems with the benefits system (delays, inadequacy and deductions)
- Challenging life experiences or ill health
- Lack of informal or formal support
- Now in 2023.- soaring energy, food and general cost of living prices.

## How You Can Help? What items you can donate?

Think about food stuffs that do not require heating e.g.

Cereal	UHT Milk	Tinned Fish
Tinned Fruit	Biscuits	Tinned Beans
Long Life Fruit Juices		

## Other Items / Ways you can Help?

Household Cleaning Products	Sanitary Items	Nappies/Baby Wipes
Cooking Oils	Tinned Soups/Meat /Stews	
Condiments / Spices	Pasta	Rice Pasta Sauce

You can give money in an Envelope to help Guildford Food Banks to put money on users' Fuel Cards - **Just mark your envelope and give to Harry in Pratts Stores.**

## DONATION POINTS IN ALBURY.

Pratts Stores in Albury Village:- contact Harry on 01483 202123 to donate £5/£10 by card, and Harry will select items for you to place in the Food Bank Collection Box.

OR purchase items from Harry to donate to the Food Bank.

OR in St Peter & St Paul's Church in Albury in the Lobby- on Saturdays 10am - 4pm or Sunday mornings, 9am - 11am.

**THANK YOU FOR YOUR SUPPORT.**

**DIANN ARNFIELD 01483 203464.**

## Your garden in February

February was named for the Roman festival of purification called *Februa*, during which people were ritually washed. The Romans also had hypocausts, a heated space underneath buildings, notably bath houses. A necessity for ritual bathing I would have thought. Would this be a practical method of heating potting sheds or greenhouses? Probably not, unless you happen to have a Victorian hothouse complete with boiler and cast iron pipes.

The first signs that spring is on the way can be seen. Primroses are in flower, snowdrops are beginning to appear and the odd early daffodil can be seen. Winter aconites also bloom early in the year. The weeds of course have never gone away.

It is a good time to prepare vegetable beds for spring sowing. Clear any weeds that are there and add a layer of compost if you didn't put it on in the autumn. If you are using home-made compost, give the weeds a while to appear and hoe off before planting. If you put in autumn onion sets and garlic, it is a good time to potter outside if the weather allows and weed the rows.

In the flower beds, a thick mulch will help keep weeds away. Leave cutting the top growth off for as long as possible as it provides cover for overwintering insects, some of them might even be friendly.

In the greenhouse, you can start thinking about sowing some seeds. First you will need to tidy your greenhouse. Throw out all of the plants that didn't survive the last cold spell. Check the bottom of pots for slugs and other unwelcome visitors. Cut back any dead foliage on the pots you may have put there to overwinter. Clean seed trays and check that heated propagators still work. You can sow peppers, tomatoes and aubergines in a heated propagator at about 21C. If you have a warm conservatory, this could also be used. The gardener will also do well in a well lit, warm environment with plenty of liquid refreshment. Don't overwater, this could lead to damping off.

It is time to plant bare rooted trees and shrubs, provided the weather is not too cold. If the ground is frozen, keep the plants in a frost free shed or garage. If the cold weather is prolonged, dunk the roots in water for a few minutes and plant in a large tub until the weather is better.

Many romantic gardeners will want to celebrate St Valentine's Day, the 14th February. Perhaps a houseplant or an early flowering shrub rather than a bunch of flowers and a box of chocolates would be appreciated. It is also the start of Lent, so perhaps not the chocolates.

This year is a leap year. Don't sow peas and beans on 29th February as some believe they would grow on the wrong side of the pod. (??) Charles Darwin was very sceptical about this as mentioned in his autobiography. Happy gardening



## **Albury Parish Neighbourhood Plan Housing Needs Survey**

We must assess housing need in the parish, and we need your help.

Are you a first-time buyer?

Are you struggling to find a home  
that you can afford to buy or rent?

Do you live or work in Albury Parish?

Do you want to downsize?

A survey has been sent out. Please complete it now or scan the QR code  
and tell us your housing needs.

You don't need to be a homeowner to participate.



Or contact Nicola Davidson for more information

[nicolad@surreyca.org.uk](mailto:nicolad@surreyca.org.uk)  
[www.surreyca.org.uk](http://www.surreyca.org.uk)

### **And if love should die....**

While we were working at a men's clothing store, a customer asked my colleague to help her pick out a tie that would make her husband's blue eyes stand out. "Ma'am," he explained, "any tie will make blue eyes stand out, if you tie it tight enough."



## **Pottery Making Event At St Michaels Barn Church**

Would you like to hand build an item of Earthenware? Get your hands in the clay?

We will be holding a pottery class on 13<sup>th</sup> April 2024.

1.30pm approximately 3 to 4 hours.

Your item will be taken away and biscuit fired.

You should be able to return on the 27<sup>th</sup> of April 1.30 pm for approximately 2 hours to decorate with underglazes and glazes.

Your work will again be taken away and fired in a kiln.

Your work of art can be collected at convenient weekend from a local house in Farley Green approximately 2 weeks later.

The cost will be £35 per person. All materials provided.

Please phone Marion 07909 764613 to book your place. Please book early as space will be limited.

It is intended that we will all make the similar items (Scruffy Dogs) approximately 8 inches tall. The technique will be demonstrated in stages for you to follow.

No experience necessary.

This will be our first pottery event and if popular other events will be held later in the year.

-----

## **Other 2024 dates for your Diaries**

### **Community Food Bank Saturday Cafes:**

March 9th, June 8th, September 14th & November 9th



# THE EGG THAT SHARES THE EASTER STORY



**Special Edition**  
(RRP £9.99)



**Fun Pack**  
(RRP £5.00)

**Original**  
(RRP from £4.50)

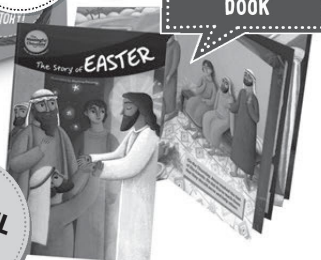


**Dark** (RRP £5.50)



**NOW  
PLASTIC  
FREE**

**New 24  
page Easter  
story-activity  
book**



**PALM OIL  
FREE**

**All Real Easter Eggs come with an Easter story in the box. The stories range from simple guides to 24 page activity book versions.**

**So, buy a Real Easter Egg this spring and encourage others to give one to their loved ones, a school or sponsor a food bank donation.**

## Where to buy

**The 2024 Real Easter Egg will not be available in any supermarkets. The full range can be ordered at [www.realeasteregg.co.uk](http://www.realeasteregg.co.uk) or by calling 01925 877004.**

Out of the 80 million Easter eggs sold in this part of the world every year, The Real Easter Egg is the only one which has a copy of the Easter story in the box, is made of Fairtrade chocolate and which supports charitable projects.

The Original and Dark eggs include a 24 page Easter story-activity book. They are Palm Oil and plastic free, and include a competition.

The Fun Pack has an Easter story activity poster and 6 milk chocolate eggs.

The Special Edition has a designer Easter card, a milk chocolate Happy Easter bar and a luxury milk chocolate egg.

**See the full shop list or order at [www.realeasteregg.co.uk](http://www.realeasteregg.co.uk)**

**Order from Sheena email [sheena.pearson@btpenworld.com](mailto:sheena.pearson@btpenworld.com)**



## Parish People - Walter Willcox



*Towards the end of 2021, several friends suggested that I contact Walter Gordon Mason Willcox, affectionately known as 'Walking Walter' in view of his passion for rambling. In retirement, he worked tirelessly on the installation of hyperfast broadband in Albury. In February 2022, I spoke to Walter at the telephone, when he proved eager to meet up and tell his story. Sadly, Walter died only a few days later so we never met. His widow, Jo, daughters, Anneli and Pip, brother Norman, and other relatives and friends have helped put together the sort of answers Walter might have given. Nobody can imitate the real Walter, but I hope he would not entirely disapprove this posthumous tribute.*



### **Q. Where were you born?**

A. I was a wartime baby, arriving appropriately in Aldershot on 27 March 1940, the first child of Cyril and Avril Willcox. I was too young to remember much about the war, and if I became aware of such things as rationing, air raids and blackouts, they would have seemed perfectly normal. I remember that my mother kept chickens, as many did then, to help cope with food rationing.

### **Q. What are your memories?**

A. My brother, Norman, arrived a year after me, so I had a companion from the start. Our father was away in Egypt for much of the war and the two of us were brought up by four women (our mother and three friends, probably escaping the London blitz). We enjoyed a lot of freedom in a rural part of Farnborough, experiencing adventures in the great outdoors. We did lots of things together as children, like climbing the railway embankment and flattening pennies by placing them on the line for trains to run over.

### **Q. What were your hobbies?**

A. I always liked practical tasks. An engineer of some note, who lived in our village, taught me to make explosives! I took to this with some enthusiasm,

and some jeopardy for anyone who came near. A projectile horseshoe was a particular experiment. Norman and I were taken on Sunday afternoon walks towards Frimley Green through heathland, an area since desecrated by sand pits. My little brother used to find these quite boring, but I helped him by making our own entertainment as we went. I always loved the outdoors and adventure, and these provided the opportunity for discovery, for example, our model rocket experiments, which were largely unsuccessful.

**Q. Where did you spend your holidays?**

- A. My parents took us to a farm in Charmouth in Dorset, where we camped together many times after the war. There I recall meeting my father for the first time, after his return from Egypt. On a much later occasion, Norman and I rode our bicycles from Farnborough the 125 miles to Charmouth, stopping at a friend's house at Wimbourne Minster overnight. As a teenager, a friend and I set off for France on our bikes, with a little money and a puncture repair kit and scarcely a word of French. We got as far as Nantes, surviving on bread, cheese and goodwill. In our early married life, Jo and I accompanied my parents in their camper van to Germany and Austria, and once as far as Yugoslavia.

**Q. Where were you educated?**

- A. First with Norman to 'Rosemary Lodge' a kindergarten run by a Farnborough Convent. Then I attended Salesian College, as later did three of my grandchildren. Then Farnborough Grammar School. However, I'm not academic, and prefer to learn practical skills, so I left school to take an apprenticeship with Southern Electricity Board (SEB). Norman left a year later to work for the Royal Aircraft Establishment. As an apprentice and the youngest member of a team, I would be the one selected to climb electricity poles in all weathers! I was given day release to obtain a qualification in electrical engineering.

**Q. After your apprenticeship?**

- A. It was 1962 and National Service had ended so I took a job at Decca Radar, which was later acquired by Plessey. There I worked on radar, and the early computer systems, as an electrical draftsman, and later as a computer operations manager. It was primitive technology by today's standards.

**Q. And in your spare time?**

- A. I joined the Young Conservatives, which provided an active social life. That's where I met Jo Amos, as she was then. We had our first date at the opening night of the Proms in 1964. I proposed on the last night, and we married the following January. We celebrated our 57th anniversary in January 2022.

**Q. Did your work take you abroad?**

- A. Sometimes. Once to Persia, as it was then called, when our relationship with that country was friendly. Nearer home, I helped install radar at Guernsey Airport. There I learnt a salutary lesson in health and safety when I was up in a sinking installation rig with its stabilizer feet unevenly into the grass. I had to jump from some height.



**Q. Where did you live?**

- A. Our first house together was on the outskirts of Guildford, where Jo taught Latin. In 1973 we set up our family home in Mellow, conveniently close to the Downs, which we have kept to the current day. Both homes provided scope for practical tasks including renovation and rewiring, installing heating and telephones. Perhaps it was a case of taking my work home.

**Q. Tell me about your family?**

- A. Jo and I had three children. I am very proud and pleased that both my daughters are successfully following careers of their choice. Anneli as a musician and teacher, married to Andy James. They live in Godalming, which is close, so we met up regularly. They have three children Diccon, Danica and Theo. Our second child, also called Diccon, sadly died at age 22. Our younger daughter, Pip, lives in Oxford, which is not too far away so Jo can see her quite frequently. She is a research leader in digital scholarship, focusing on library and archive collections.

**Q. How did you earn the nickname 'Walking Walter'?**

- A. Since childhood, I've always enjoyed walking in the countryside. As our children grew up, we had family holidays in the Black Mountains, a series of ranges shaped like the fingers on a hand. We walked in all weathers. Just a question of having the right clothing, and a healthy respect for what could be rapidly changing weather conditions. I enjoyed teaching that to my children, walking them up and over one of the Black Mountain fingers. If it looked to be getting towards zero visibility, we would not venture forth that day. Nearer home, I enjoyed exploring the Surrey Hills, sometimes alone, but often in the company of friends, stopping at pubs with proper draft bitter, such as William IV in Little London.

**Q. How did your career develop?**

- A. All occupations undergo changes over the years but in computing and information technology changes have been rapid. Think of the size of the enigma machine around the time of my birth and the vast and as they now appear, primitive computers of my early career and now the versatility of today in something the size of a mobile phone. Sometimes one must change jobs to keep abreast of developments and avoid being stuck in one role, where one might become very adept, but the work may become obsolete. So, I moved in 1975 to Micro Computer Systems in Woking, then to Westcode in Wokingham. In 1986 I set up my own software engineering consultancy 'Amos Enterprises'.

**Q. What did Amos Enterprises undertake?**

- A. My own boss at last, I could take on tasks that I enjoyed. I specialised in telemetry systems for anything that flowed, electricity, orange juice, oil, water, gas and so forth.

**Q. Where did this work take you?**

- A. Mostly around the UK. I found beautiful British countryside in all the places I worked, such as Scotland, and Norfolk, where I could also indulge my passion for exploring and walking in my spare time. This was a very happy time.

Engineering work, and the great outdoors, with the love and support of my family. Although, in recent years I shocked my family by telling them of some of hair-raising walks I undertook whilst working away from home, for example high up in the mountains in very snowy weather. I often hadn't told anybody where I was going, although that was a cardinal rule, which I had taught my children. I was sometimes able to help other walkers, who had lost their way, directing them back onto safer paths.

**Q. How did you spend retirement?**

- A. Blessed with a pension and without the necessity for regular employment, retirement brings great opportunities. One must certainly keep active, but also stay useful. Helping people was something I wanted to continue to do into my retirement. Happily, I have been fit enough to continue working in all sorts of locations, and I would help in small ways such as the BBQ at Albury Sports Club. Then a big opportunity opened up.

**Q. What was that?**

- A. I heard about Broadland for the Rural North (B4RN), a project that would bring fast broadband to rural areas. I knew that I should get involved. Technology can transform lives and livelihoods. It proved to be better than I'd hoped for. Here a group of volunteers had taken things into their own hands to bring a symmetrical gigabit of broadband to people's homes in Lancashire, Cumbria and Yorkshire. There were wayleaves to sort, equipment to be obtained, trenches to be dug. I could perfect my technique for blowing and fusing fibre and teach others how to do it. We might work all day, getting ducting laid and fibre blown, and as far as possible leaving the land as we found it. A chance to work in the open air in beautiful countryside, in places like Silverdale, Arnsdale, Wennington and Melling. There were many opportunities for scenic walking in my spare time, getting to know the quirky lanes and farm tracks. I made wonderful new friends, working alongside them in this stunning countryside.

**Q. Where did you stay, so far from home?**

- A. I enjoyed excellent hospitality from the wonderful people in Lancashire, to whom I'm most grateful. For example, Sheena, who offered her spare room and cooked me huge breakfasts that set me up for the day. (*Sheena reports: "Walter had the confidence in B4RN to be the first shareholder. His dogged determination in filthy weather 'oop north' daunted many much younger than he was when out and about with B4RN"*)

**Q. Was your work blighted by bad weather?**

- A. Those who complain about bad weather just aren't wearing appropriate clothing! As the weather worsened, our determination increased, and our friendships strengthened. For example, blowing fibre in the snow in the Lowgill Fells we all felt motivated. We couldn't just give up and go home.

**Q. What next?**

- A. I had earlier attempted to improve the broadband in Ewhurst, initially through people I had met on my trips to the William IV. The work did not result in a successful outcome as BT came along with proposals that would have resolved

the village and surrounding area problems but eventually, they did not proceed with the project. (Box Broadband has subsequently improved the broadband service).

What worked in the north, could work in Surrey. With the involvement of several people that I had met on the Ewhurst project, and their contacts, 'Broadband for the Surrey Hills' (B4SH) was formed. I talked my next door neighbour into supplying secretarial support to the fledgling company. With the help B4RN employees, who came down south to initially help with the early route planning, we started the installation from the connection with the Zayo countrywide broadband spine in Staple Lane above Shere.

With the willing support of the Albury Estate, with a free wayleave over estate land, and investment from several generous people, we were able to install the service to Silent Pool Distillers and Albury Vineyard and then across the A25 to our first cabinet at Home Farm, which we also used as a base for equipment storage.

B4RN have continued to offer support to us with regular visits from one of their technical guys, who has passed on his knowledge to several of our technically minded volunteers, and who continue to monitor, and assist as required, with the B4SH service.

In the end, my health problems started to slow me up (but not stop me!) out in the field, but I ensured that service to parts of Albury, Shamley Green, via a crossing of Blackheath and Farley Green, were a priority, and ensuring that my enthusiasm for community led broadband is passed on to a willing group of volunteers.

*Richard Floyd*

## What's on in February

3	6.00 p.m.	Shere Village Cinema special Mission Impossible 7	Shere Village Hall	25
18	7.30 p.m.	Shere Village Cinema The Great Escaper	Shere Village Hall	25
24	12.30 p.m.	QRMW Easter Egg Hunt	Holmbury St Mary	16
Every Monday 10.00 a.m. -12.30		The Monday Cafe	The Memorial Library Albury	5
For Gomshall Club meetings, see page 18				

**COME AND JOIN US AT**  
**THE QUICK RESPONSE MEMORIAL WOODLAND**

Registered Charity No: 1174651

Pasturewood Road, Holmbury St Mary RH5 6LG

**CHARITY EASTER EGG HUNT AND FUN DAY**

**On SUNDAY 24th MARCH**

**At 12.30pm**

**Fun and games for all the family**

Easter Egg Hunt

Egg and Spoon Races for all ages

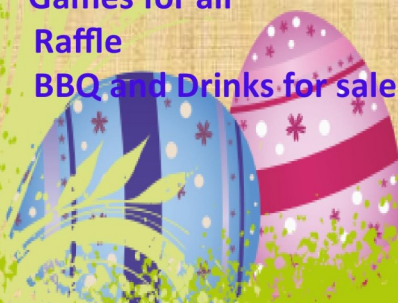
Easter Egg Stall

Easter Soft Toy Tombola

Games for all

Raffle

BBQ and Drinks for sale



**Children £8 each**

**Please Register Children ASAP to avoid  
disappointment as numbers are limited**

**Email: [Debbiehornblow@yahoo.co.uk](mailto:Debbiehornblow@yahoo.co.uk)**

**Tel: 07778873806**

## QRMW

February is upon and I am delighted to say that the woodland is well and truly springing into life. The Spring bulbs are well up and buds on many of them and the birds are immensely busy and quite vocal throughout the woodland. I have even seen a couple of the bird boxes being prepared to make a home for this year's family!

We have a very exciting year ahead of us as it will be our 10<sup>th</sup> Anniversary since the Memorial Woodland was officially opened on 1<sup>st</sup> June 2014. We will be holding a big celebration at the woodland this year precisely 10 years on to which everyone is invited to attend. So do put Saturday 1<sup>st</sup> June in your diaries.

Before that though we have our extremely popular Easter Egg Hunt and family fun day at the woodland which will take place on Sunday 24<sup>th</sup> March commencing at 12.30. The Easter Egg Hunt is going to be great fun this year, instead of me wracking my brain for something a bit different for the children to enjoy, we have a new supporter who is organizing it and I know the children will love it. The children do need to be registered so please contact [Debbiehornblow@yahoo.co.uk](mailto:Debbiehornblow@yahoo.co.uk) and advise her of the names of the children to register. The cost is £8 per child for which they all get a goody bag at the end of the Easter Egg Hunt. Apart from that there are Egg and Spoon races for the children and Mums and Dads! We have games for the children, an Easter Raffle, an Easter Egg stall (so come and buy your eggs cheaply from us and help us to help those Veterans who need assistance). There will also be a BBQ with hot dogs and Burgers and other stalls to enjoy. Do bring cash with you because bank cards do not work in the woodland.

Just a thought if anyone would like to donate an Easter Egg for the raffle or some smaller ones for the Easter Egg Stall all donations would be greatly appreciated. All proceeds from this event go towards assisting those Veterans who are in difficulty. We are all volunteers and take nothing from the Charity.

I really look forward to seeing you at both of the above events but of course you are always welcome to visit the woodland at anytime, it is open 24/7. If I am there then the Visitors Centre is open and the kettle is on but if I can't be there on the day you visit you can park at the front and enter through the side gate.

*Paul Cooling  
Chairman*

*The Quick Response Memorial Woodland  
Registered Charity No [1174651](#)*

## Off to the vet

In his younger days our golden retriever Catcher often ran away when he had the chance. The vet's surgery was about a mile down the road, and Catcher would usually go there. The nursing staff knew him and would call me to come pick him up.

One day I called the vet to make an appointment for Catcher's yearly vaccine. "Will you bring him," asked the receptionist, "or will he come down on his own?"

## Gomshall Village Club

The Christmas Meat Draw arranged by Yvonne Babbage was a great success everyone joining in the fun. Very appropriately Yvonne won the last prize.

In December Slurred entertained us in The Lounge with a variety of 80's music, Glam Rock, getting people onto the dance floor. a very entertaining evening finishing with a rendition of Merry Christmas Everyone - Slade.

The Children's Christmas Party arranged by Rachel, with help of Sam, Grace and Emily, was a success with the Children having a great time and I managed to get a super pair of glasses.

The Grand Christmas Draw arranged by Maria Yates following the Children's Party drew a large crowd, who had a very enjoyable afternoon with lots of prizes.

We wish to thank Yvonne, Rachel and Maria for all their hard work.

Christmas Eve saw The Nativity led by Rev. Sarah Hutton; a large number of children taking part. Along with Club Chairman, Richard Stoten, being a very fierce Herod. Sarah always seems to put a new slant on the age old story that is relevant in today's 'speak'. The rector, Tim Heaney, led the singing with Debbie and Graham (Dracula) providing the music.

Members enjoyed Christmas and New Year celebrations and are now looking forward to a full year of events. The first event of the year was another of Will's wonderful Bingo nights. It was another very successful fun, evening; with Clive, Marion and Katie being lucky on the night.

We are sad to report that on 15<sup>th</sup> December a life time member, Joe Knapp, passed away peacefully. We would like to express our deepest sympathy his family on their loss. A reception (wake) is to be held in The Lounge at Gomshall Village Club on Saturday 27<sup>th</sup> January.

### **UP COMING EVENTS - Please come along and enjoy these events**

Saturday 27<sup>th</sup> January - Wills Challenging Quiz 8pm

Friday 2<sup>nd</sup> February - Bingo 8pm

Saturday 3<sup>rd</sup> February - Sal's Poker 7pm

Saturday 17<sup>th</sup> February - Flip the Bird -Band 8.30pm

Saturday 24<sup>th</sup> February - Quiz 8pm

Saturday 24<sup>th</sup> February - Wills Challenging Quiz

Saturday 16<sup>th</sup> March - Beyond Therapy Country - Rock Band - 8.30

**We open at 6pm - 10.30pm Monday - Thursday**

**Friday 4.30pm to 11.30pm**

**Saturday noon to 11.30pm**

**Opening times are prominently displayed on the front door.**

*Please come along and join us. Non-members pay £1 signing in fee. New members are always welcome.*

## Peaslake Free School

With all the excitement of Christmas now in the distant past, we've been focusing on our new year's resolutions and trying to stick to them! To do this, the children made magic wands (because you can never have enough glitter in an infant school!) to help remind them of their goals. Resolutions consisted of improving Lego and drawing skills, helping others, and getting themselves dressed. Far more original than the usual diets and exercise. Year 2 also looked at how other countries celebrate New Year, did you know in Columbia they bring empty suitcases outside around the houses, in South America they wear colourful underpants and in Spain they rush to eat 12 grapes to represent the 12 chimes of midnight?

With the advent of frosty mornings, our weekly walk to our dedicated Forest School area in the nearby woods has been both magical and stimulating as we learn to cope with cold fingers and toes. The children love seeing how fallen leaves are transformed from a brown soggy mass into objects of beauty, glistening in the sunlight with a sprinkling of sparkly white. Keeping warm under the trees is pivotal in outdoor activities at this time of year, as is having the right clothes to keep us cosy while we make models with clay, incorporating twigs, stones and other "treasures" we uncover. But nothing says warmth like gathering round a campfire and toasting marshmallows, happiness all round. Just a taste of what we do during our sessions in the woods.

In Art we are exploring printing techniques both indoors and outdoors using a variety of natural and manmade materials. Artwork created using natural leaves under linen, then applying hammering skills with a mallet, not only kept us warm but also made some inspiring pictures. Back in class, the children have been printing using their hands and feet to create colourful backdrops to still life pictures.

These are just some of the activities that make our daily school life special, our wonderful location and dedicated staff make Peaslake School a great place to start a child's journey into the world of education. If you are interested in finding out more about the School or Nursery, do come and visit by contacting us on 01306 730411 or email [info@peaslakefreeschool.com](mailto:info@peaslakefreeschool.com).

*Sara Dangerfield*

## Peaslake Nursery

Winter Wonders and Gratitude: A Cosy Update from Nursery

As we cosy up in the warmth of our Nursery during these chilly months of January and February, it's a delight to explore the enchanting world of winter themes with our little ones. Frost-kissed mornings and the magical allure of snowflakes have filled our days with wonder and excitement.

In the heart of our Nursery, story-time is a cherished, with the little ones eagerly listening to their favourite story books. The joy of reading has been further increased by the generosity of recently-retired Peaslake Childminder, Jackie Kennedy. Jackie has gifted us a treasure trove of resources that have added a touch of magic to our days. From charming dolls' prams to a vibrant red tractor and trailer that perfectly complements our farm set, the children have been

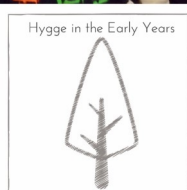


immersed in imaginative play. And let's not forget our very own Tiger Who Came to Tea, providing a snug companion in our beloved book corner.



As Jackie embarks on her journey into nannying and other future endeavours, we would like to extend our heartfelt gratitude. These items and the many other resources gifted to us have not only enriched our Nursery environment, but I'm sure will also create countless smiles and moments of joy for our little ones.

Here's to winter adventures, heartwarming stories, and the spirit of generosity that makes our Hygge inspired Nursery a magical place to grow and learn.



*Louise Collins*

## **Sleeping Beauty - but she could be stirring....**

As well she might because at the time of writing, there are two weeks until the opening night of our brand new Pantomime, 'Sleeping Beauty' (oh yes, and those 40 Winks). There's lots of excitement in the Peaslake Players camp as the cast and crew prepare to deliver you yet another sparkling show, with it all the ingredients of a traditional family Panto - songs, dances, 'boos and hisses', gags by the bucket load... and talking of buckets, watch out for a few surprises!

Waiting to greet you are a host of familiar and not-so-familiar characters - from the Princess waiting to be rescued, to the dashing Prince eager to rescue her; from the evil Maleficent (we think that's how you spell it), to the kindly fairies who hope to remember some of their spells; and from the witch's blithering sidekicks to the outrageous Queen Frederica (please don't call her 'Freddie'). There's also a rather mysterious frog called TAFKAP - and just who are 'The Winks'?.....

If you can bear the intrigue no more, join us at the Peaslake Village Hall and all will be revealed (almost all, anyway). Tickets have been flying off the shelf but there are still some available so we hope to see you there. - bookings can be made through <http://www.peaslakeplayers.co.uk>

Eight shows (including three matinees) from Friday 26th January to Saturday 3rd February.

*Katie Kinnes*



## Shere Village Cinema (SVC)

### Book now for films in February and March



**SHERE  
VILLAGE  
CINEMA**

On Saturday February 3<sup>rd</sup> we have our Winter event with hot food and a pay bar - see the details below. We hope that you will join us for this, and/or one of the films that we will be showing through the coming months. To sign up to our newsletter and/or to book tickets for future films please go to the website: [www.sherevillagecinema.com](http://www.sherevillagecinema.com)). You can also buy tickets from the shops: Crumbs and/or the Surrey Hills Beer & Gin Company in Shere. All tickets, except where indicated, cost £5/adult and £3.50/child.

A reminder that we do not have a licence to sell alcohol at our regular film shows, and cannot accept donations towards the cost of buying wine or beer etc. However, at regular film shows we are very happy for you to bring along your own wine or other beverage to drink whilst watching the films; and many of our 'members' bring a bottle and put it on the table to share with others. It's one of those things that makes Shere Village Cinema special.

We always have a donation box for our charity donations, and now have a card reader specifically for donations. We rely on any profits from sales and ice creams, plus any donations to give to a local charity that we are aware of, and needs support. However, without your attendance at films, and the generosity of your donations to our charities, we cannot do this.

In February we will be showing the following films:

**Saturday 3<sup>rd</sup> February - Mission Impossible, Dead Reckoning** - this is our special **Winter Event**, with table seating and a pay bar for wine, beer and soft drinks. The cost of the tickets is: £10/adult and £7/child (under 16), which includes a warming beef or vegetarian casserole. (The doors will open at 6pm for drinks, food will be served from the tables at 6.30pm, and the film will start at 7.15pm.)

**Mission Impossible, Dead Reckoning.** This is the 7<sup>th</sup> in the Mission Impossible series of films, but there is no let-up to the action, so prepare to have your adrenaline pumping and your breath stolen as it delivers an explosive and jaw-dropping cinematic experience. Tom Cruise returns as the iconic Ethan Hunt, and his commitment to his craft is unparalleled. At 61 years old, Cruise continues to defy the laws of physics and deliver awe-inspiring stunts that will leave you breathless. The ensemble cast including Rebecca Ferguson, Simon Pegg and Ving Rhames, who deliver stellar performances, adding depth and complexity to the narrative. The plot weaves a web of twists and turns, keeping audiences engaged and guessing until the very end. This is 'a must-see for action-enthusiasts and moviegoers alike'. Classification: 12A (Running time is 2 hours 43 minutes) Start time: 7.15pm

**Sunday 18<sup>th</sup> February - The Great Escaper** - is based on the true story of 89-year-old British World War II Royal Navy veteran Bernard Jordan who "broke out" of his nursing home to attend the 70th anniversary D-Day commemorations in France in June 2014. The film is unexpectedly melancholic in approach, with Michael Caine (as Bernard Jordan) delivering a gruffly heart-breaking performance as a man

belatedly confronting crippling survivor's guilt and the knowledge that the psychological wounds sustained in battle never fully heal. It is a very moving story with terrific performances from Michael Caine and Glenda Jackson as his wife, in her final role. The story celebrates their love without sentimentality and with an eye to the lessons we can all learn from the Greatest Generation. Classification: 12A (Running time is 1 hour 36 minutes) Start time: **7.30pm**

In **March** we will be showing the following films:

**Thursday 7<sup>th</sup> March - The Old Oak** - is the story of Syrian refugees arriving in a former mining village in the northeast of England, "where the skies are permanently grim". Their reception is hostile, but the local pub landlord T.J. Ballentyne (Dave Turner) strikes up a friendship with Yara (Ebla Mari), whose prize camera has been smashed by racist thugs. This is Ken Loach's latest film, which is a ringing statement of faith in compassion for the oppressed. Despite it being fiction, many living in Britain will unfortunately recognise the language and sentiment. However, it is not all doom and gloom. It also shows the best of humanity and how people can rally around each other, which also makes for a truly inspiring film. Classification: 15 (Running time is 1 hour 30 minutes) Start time: **7.30pm**

**Sunday 17<sup>th</sup> - The Miracle Club** - is a 2023 comedy-drama film set on the outskirts of Dublin in 1967, that tells the story of a group of women who go on a pilgrimage to Lourdes - each in desperate need of their own personal miracle. The trip seems like an answer to all their prayers. But when they are joined by Chrissie (Laura Linney), returning to Dublin after decades in America, deep wounds from the past are re-opened and bitter truths exposed. As they confront one another and embrace their shared past, the group reckon with revelations that will change them forever. Maggie Smith and Kathy Bates play close friends Lily and Eileen, who along with Dolly and Sheila, want to taste freedom and escape the gauntlet of domestic life. A beautifully acted film about faith and the ties that bind, despite the secrets and lies. Classification: 12A (Running time is 1 hour 31 minutes). Start time is: **7.30pm**

*Shere Village Cinema Team*



On 14<sup>th</sup> February our annual National Nestbox Week begins.

Now an established part of the ornithological calendar, it aims to encourage people to help out the birds in their gardens each Spring. Everyone is invited to put up more nestboxes in their local area, and a very helpful website gives full instructions on how to do this.

## All in the month of February

150 years ago, on 15<sup>th</sup> Feb 1874 that Sir Ernest Shackleton was born. This Irish-born British polar explorer was one of the leading explorers during the Heroic Age of Antarctic Exploration. He led three British expeditions to the Antarctic.

100 years ago, on 5<sup>th</sup> Feb 1924 that BBC Radio broadcast the 'six-pips' Greenwich Time Signal for the first time.

Also 100 years ago, on 12<sup>th</sup> Feb 1924 that George Gershwin's *Rhapsody in Blue* was performed for the first time, in New York.

90 years ago, on 23<sup>rd</sup> Feb 1934 that Edward Elgar, the British composer, died.

75 years ago, on 22<sup>nd</sup> Feb 1949 that Niki Lauda, Austrian racing driver was born. He was Formula One World Champion in 1975, 1977 and 1984. He was severely injured and burnt in a crash at the 1976 German Grand Prix. (Died 2019.)

70 years ago, on 23<sup>rd</sup> Feb 1954 that the first field test of the polio vaccine began in Pittsburgh. It grew into a year-long national trial involving 1.8 million children.

65 years ago, 3<sup>rd</sup> Feb 1959, became 'the day the music died', when American rock-and-roll performers Buddy Holly, Ritchie Valens and The Big Bopper were killed in a plane crash in Iowa.

60 years ago, on 7<sup>th</sup> Feb 1964 that the Beatles arrived in New York for their first US tour. They were met by thousands of screaming fans.

50 years ago, on 7<sup>th</sup> Feb 1974 that Conservative Prime Minister Edward Heath called a snap general election following the miners' strike and three-day week. It resulted in a hung parliament, and the Labour leader, Harold Wilson, became Prime Minister.

40 years ago, on 14<sup>th</sup> Feb 1984 that figure skaters Jayne Torvill and Christopher Dean won the gold medal in ice-skating at the Winter Olympics in Sarajevo. They scored the first perfect 6.0 in Olympic history.

30 years ago, on 25<sup>th</sup> Feb 1994 that serial killer Fred West was arrested in connection with the disappearance of his daughter. Police then discovered human bones buried in his garden. He was eventually charged with 11 murders, and his wife Rosemary with ten murders.

25 years ago, on 1<sup>st</sup> Feb 1999 that the International Maritime Organisation stopped using the Morse code 'SOS' distress call. All sea-going vessels were required to have a Global Maritime Distress and Safety System (GMDSS) fitted by this date.

20 years ago, on 4<sup>th</sup> Feb 2004 that Facebook, the social media networking platform, was launched.

15 years ago, on 7<sup>th</sup> Feb 2009 that the Black Saturday bushfires took place in Australia. The worst in Australia's history, they destroyed 1.1 million acres of land, killed 173 people, injured 414, and burned down more than 3,500 buildings, including 2,000 houses.

*From the Parish Pump*

## Improve the look, water protection and value of your home with your local trusted experts



- Roof Repairs
- New Installations
- Flat roofs - rubber roof, fibreglass, felt
- Moss removal



- Fascia, guttering & soffits
- Certified and experienced to work on Grade I and II Listed buildings



Hivegove, 3b Kings Court  
Burrows Lane, Gomshall, GU5 9QE

**01483 387 417**

enquiries@woodpeckerroofing.co.uk  
www.woodpeckerroofing.co.uk



**WOODPECKER ROOFING**  
ROOFING YOU CAN PUT YOUR FAITH IN

## SOLVING PEST PROBLEMS OTHERS CAN'T

- SINCE 2008

**For homes and businesses**



ALL PESTS: Rats, mice, squirrels, wasps, woodworm, ants, deer fencing, loft insulation clearance, bee rescue



Surrey's highest rated pest control service on

**Google** ★★★★★

Rated 4.8 on 141 reviews as of 16 March 2023



“ I cannot praise these guys high enough. Incredibly responsive, knowledgeable and customer focussed. It was a pleasure to work with them. I would have no hesitation recommending them to anyone in need of their services. - Simon ”

**01483 387 187**

www.pghpestcontrol.co.uk  
www.beegone.co.uk  
sales@pghbeegone.co.uk



**PGH**  
PEST PREVENTION

**Beegone**  
LIVE BEE REMOVAL



## The Albury Estate

Weston Yard, Albury, Guildford, Surrey, GU5 9AF

### Logs For Sale 01483 202323

**Seasoned Hardwood**

or

**Seasoned Softwood**

(suitable for wood burning stoves)

or

**Mix of Seasoned Hardwood & Softwood**

Loads delivered within a six mile radius of Albury

Please note loads are tipped and we do not offer a stacking service

Bags of logs & kindling can be purchased and collected from Albury Estate Office



## TIM JONES Tree & Ground Care

Tim Jones Tree & Ground Care offers friendly, reliable, neat and tidy landscaping services, including;

TREE WORK

LANDSCAPING

FENCING

HEDGE CUTTING

PATIOS

TURFING

GARDEN SERVICES

[www.timjonestreeandgroundcare.co.uk](http://www.timjonestreeandgroundcare.co.uk)

Call Tim on 07810 608 707

Or 01483 203 662

Email: [timjonestgc@live.co.uk](mailto:timjonestgc@live.co.uk)

## English Tutor

Local qualified tutor (DBS checked) with experience across a range of age groups and different needs.

I believe:

- Each person is an individual and there is no "one size fits all" in learning
- Growing in confidence is key to successful learning.

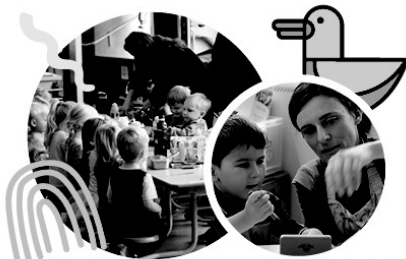
I offer one to one and one to two tutoring.

For more information contact:

Jo-Anne Ross LLB (Hons); M.A.

(Level 5 Diploma in Education and Training)

Tel: 07769291831



**Ages 2-4**

**Puddle Ducks Nursery**  
at Chilworth CofE Infant School

**Book a tour today**

**Open term time.**

**Weekdays 8.50am - 2.50pm**



**Call 01483 562476**

or email [info@chilworth.surrey.sch.uk](mailto:info@chilworth.surrey.sch.uk)

# Albury Artisan

Rooted in the Surrey Hills, I deliver **a range of fun courses** which include:

- Introduction to Garden Design (6 weeks)
- Door Wreath Making (1 day)
- Decorating Horse Shoes as Gifts (1 day)
- Green Bouquets (1 day)

For more information email Jo at [alburyartisan@gmail.com](mailto:alburyartisan@gmail.com) or call 07769291831

## TERRA COTTA

Independent Estate Agents

is an Independent Estate Agent  
specialising in Sales, Lettings &  
New Homes in the  
Surrey Hills & surrounding villages  
(all the villages between Guildford,  
Dorking & Cranleigh)

**CALL NOW FOR A FREE, NO OBLIGATION  
VALUATION OF YOUR HOME**

**Teal House, Middle Street  
Shere  
GU5 9HF**

**01483 205150**

**[www.terracotta.co.uk](http://www.terracotta.co.uk)**

*Established 1998*

# KILNHANGER



Yoga retreat days & classes with Maddy in Farley Heath, Nr. Albury, Surrey  
[www.kilnhanger.com](http://www.kilnhanger.com) @kilnhangeryoga kilnhangeryoga@gmail.com

# Albury Village Stores

Albury Street , Albury, GU5 9AG

01483 351919

Additional access and car parking available in the Drummond car park

Local fully stocked shop with a wide selection of food and drink for your every day need.

**Products are sourced from local businesses where we can!**

**Fresh meat from John Murray, Fresh fruit from Co-Op**

**Delicious frozen ready meals from COOK**

**Fresh bread and cakes from Celebrations (Cranleigh)**

**Indian Meals from Mandira's Kitchen**

## Opening hours

Monday to Saturday 0800 - 1930,

Sunday 0800 - 1400

Come and see us and judge for yourself



## Care in the Heart of your Own Home

Are you or an elderly loved one looking for extra care and support at home in **Albury, Brook Farley Green, Little London** or the surrounding areas? Then our local carers are here to help.

Novus Care is regulated by the Care Quality Commission and can provide a qualified carer to support your loved one in their own home from just **30 mins per week to full-time live in care.**



For more information or to arrange a free assessment, please contact the Novus Care Team on:

**T: 01483 494132 | E: [hello@novus-care.com](mailto:hello@novus-care.com) | W: [novus-care.com](http://novus-care.com)**



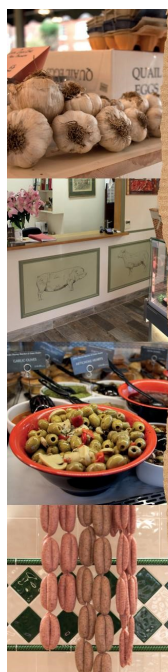


SURREY HILLS  
HEATING LTD

## DOMESTIC BOILER SERVICING AND BREAKDOWN

### OIL, LPG & GAS BOILERS

Call Dathan on: **07944 575970**  
[sales@surreyhillsheating.co.uk](mailto:sales@surreyhillsheating.co.uk)  
[www.surreyhillsheating.co.uk](http://www.surreyhillsheating.co.uk)



— Traditional —  
Butcher for 30 Years



— 01403 752859 —  
Loxwood, West Sussex

*Locally sourced, quality meats  
and full deli counter*

Local grass fed beef  
Free range pork from Storrington  
Free range duck & poultry  
Local Sussex lamb

*Our delicatessen has a full selection of homemade pies,  
cooked hams, salami, pâtés, English & Continental cheeses*

We do our very best to source as many products as  
possible from Surrey & Sussex farms and suppliers

*Home Deliveries  
Wednesday to Saturday*







**Chantries  
& Pewleys**

ESTATE AGENTS

# Is 2024 your year to move?

We specialise in selling the finest homes throughout the villages of Guildford and provide honest, professional and trustworthy advice, with our clients' best interests at heart.

If you're thinking of selling or letting this year, we'd be delighted to help. Contact us today to arrange your valuation appointment, without obligation.



**BRAMLEY**



**SHAMLEY GREEN**



**SHALFORD**



@chantriesandpewleys

Cranleigh Sales - 01483 347888

Shalford Sales - 01483 304344

Lettings Office - 01483 405222

chantriesandpewleys.com

cranleigh@chantriesandpewleys.com

shalford@chantriesandpewleys.com

lettings@chantriesandpewleys.com

# SHERE SURGERY AND DISPENSARY

Gomshall Lane, Shere, Guildford, Surrey, GU5 9DR.

01483 202066

Fax—01483 202761

Dispensary: 01483 209913

**Out of Hours Contact Numbers:** NHS 111

**Surgery and Dispensary Opening Hours:**

Monday to Friday: 8.30 a.m. to 6.30 p.m.

Closed Tuesday 1.00–3.00 p.m. for training

**Shere Surgery Website:** <https://www.sheresurgery.nhs.uk/>

## Your Parish News

Contributions for the next issue of the Parish News to  
[parishmag@alburychurches.org](mailto:parishmag@alburychurches.org)

or post to

Shire Cottage, Farley Heath, Albury, Surrey, GU5 9ER

**by the 14<sup>th</sup> of the month please**

Front cover photographs, articles, events  
and reports of local organisations are all welcome

## Sudoku

Each of the nine blocks has to contain all the numbers 1-9 within its squares. Each number can only appear once in a row, column or box.

		3		8		2		
8	7		2	9	3			
	4	2	6			5		
5	1			3			7	4
2	3						9	5
7	8			4			3	6
		7			9	4	1	
			4	5	1		6	7
	9			6		3		

© 2008 KrazyDad.com

		5			7	3		
	1					2		
7				1	5			6
	5	9			6			
			3			4	2	
6			5	4				7
		1					8	
		8	2			6		

© 2008 KrazyDad.com

# PARISH OF ALBURY AND FARLEY GREEN

Visit us at [www.alburychurches.org](http://www.alburychurches.org)

## Part of the United Benefice of Shere, Albury & Chilworth

**Rector of United Benefice** Tim Heaney (Shere) 202394  
**Resident Minister** The Rev. Andrew Pearson 07887 360061  
[minister@alburychurches.org](mailto:minister@alburychurches.org)

**Licensed Lay Minister (Reader) Emeritus:**

Mr. John Gould,

**Pastoral Assistants:** Penny Randall 203208  
Diann Arnfield 203464

**Churchwardens:** Sasja McCann [andisasja@yahoo.co.uk](mailto:andisasja@yahoo.co.uk)  
Theodora Viney [wardens@alburychurches.org](mailto:wardens@alburychurches.org)  
**Treasurer:** [treasurer@alburychurches.org](mailto:treasurer@alburychurches.org)

**Electoral Roll Officer:**

**PCC Secretary:** Linda Floyd

**Organist:** David Hughes 01306 881684

**Parish priest for Chilworth**

Rev. David Oakden

**Good Neighbours:**

Jo Kelly 01483 205446 / 07900 302794  
Helen Esplen 01483 209522 / 07771 537150

**Albury Cricket Club:** Carl Nunn 202104

**Albury Football Club:** Paul Mace [chairman@alburyfc.co.uk](mailto:chairman@alburyfc.co.uk)

**Albury Hall Bookings:** Ms Chloe Bishop, Parish Clerk 07856 010600  
[bookings@alburiyparish.org](mailto:bookings@alburiyparish.org)

**Albury History Society:** Secretary: Mrs. Margaret Clarke 202294  
[malcmargclarke@tiscali.co.uk](mailto:malcmargclarke@tiscali.co.uk)

**Albury Parish Council:** Clerk: Ms Chloe Bishop 07856 010600  
[cj.bishop@alburiyparish.org](mailto:cj.bishop@alburiyparish.org)

**Albury Post Office, Pratts Stores** 202123

**Albury Village Store** 351919

**Albury Produce Assoc:** Julie Baxter 07807 999 896  
[Juliec.bax@gmail.com](mailto:Juliec.bax@gmail.com)

**Albury Bowls Club** Mr Ken Walters 01372 454536  
[alburiybowls@gmail.com](mailto:alburiybowls@gmail.com)

**West Surrey Highways Services (Pothole line)** 03456 009009

**Shere Surgery** 202066

**Shere Dispensary** 209913

**The Modern Slavery Helpline** 08000 121700

If anyone is suspicious of an activity or concerned about some one.



## Peter's Pathway



**February 11<sup>th</sup> 4.00 p.m.**

**Come discover more about Jesus's disciple Peter and how this can help us on our 'paths'!**

**Fun activities and crafts with celebration with songs**

**Followed by tea for the children and a cuppa and cake for the adults!**

**This is an informal gathering ideal for all ages.**

**Please bring your friends along too!**

Let Sheena know by February 5<sup>th</sup> if you can join us!

St Peter and St Paul's Parish Church, Church Lane, Albury



All Age



Celebration



Christ centred



Creativity



Hospitality